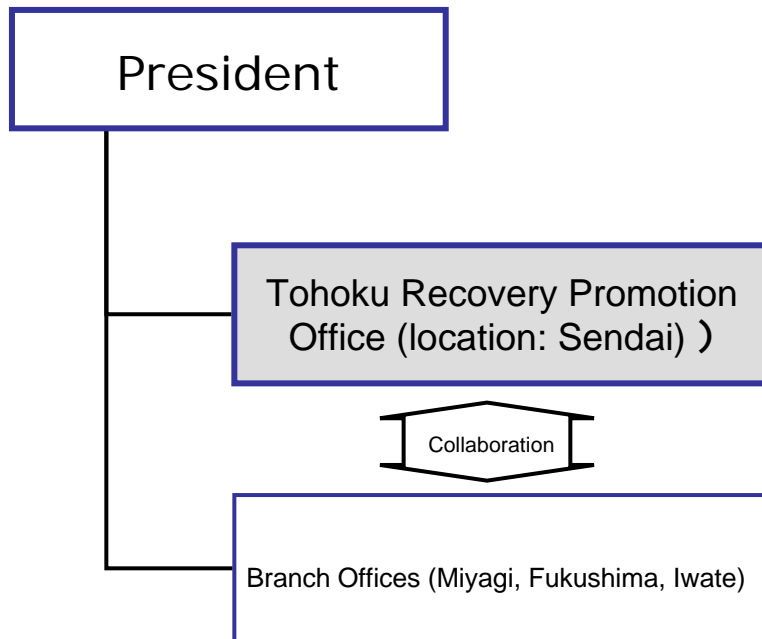


6. Structure Towards Full-Fledged Restoration and Recovery

- To centrally promote the full-fledged restoration and recovery of facilities in the Tohoku region NTT East appointed an Executive Vice President supervising Tohoku Recovery Promotion and established a “Tohoku Recovery Promotion Office” (location: Sendai) as an organization directly connected to the President (scheduled for May 16).

Recovery Promotion Structure (established May 16)



Established with the aim to promote the building of new telecommunications infrastructure associated with the recovery plans of local governments in collaboration with the respective branch offices, as well as to centrally undertake the full-fledged restoration and recovery of facilities