

Tohoku – Pacific Ocean Earthquake: Current Status and Restoration Plan



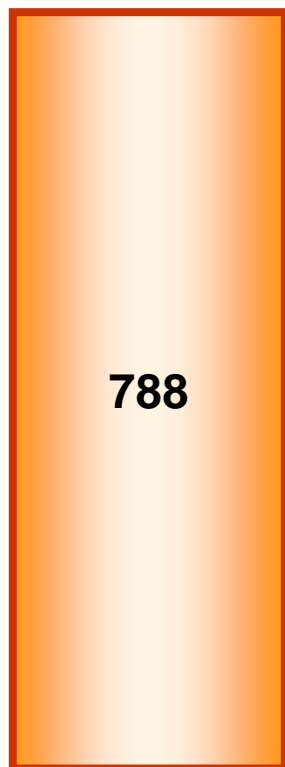
NTT DOCOMO, INC.

March 30, 2011

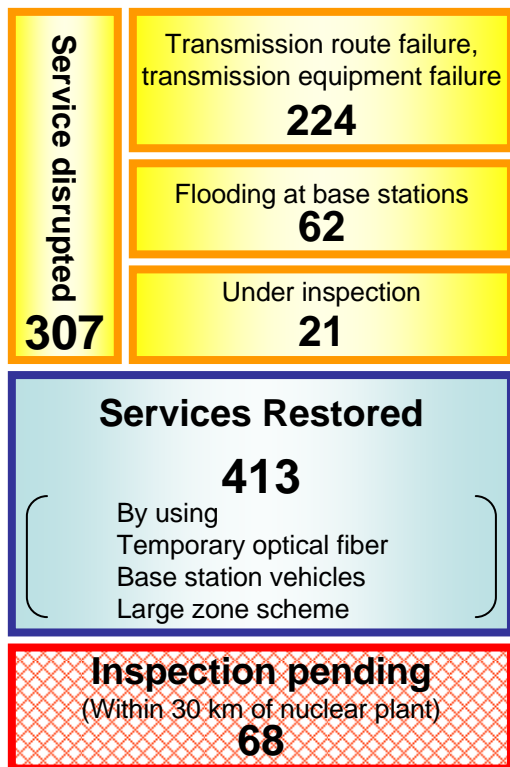
Damage to Base Stations & Restoration Measures

- 788 base stations requiring inspection as of March 22
- Immediately inspected disrupted base stations & implemented temporary repairs
- Services restored at 413 base stations by March 28
- Services disrupted at 307 base stations as of March 28

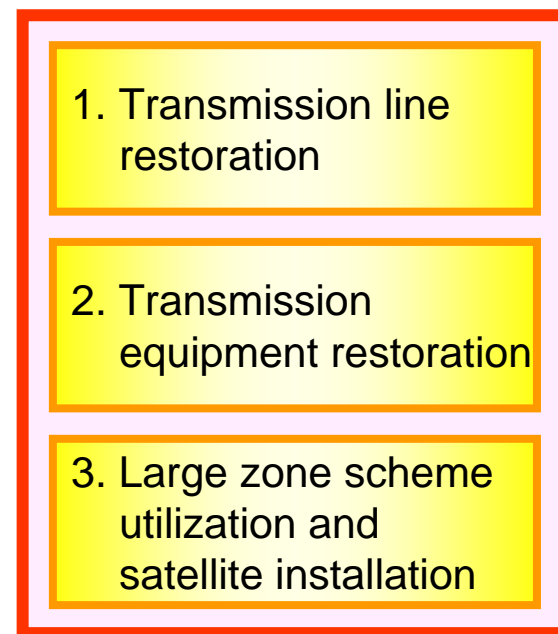
Base Stations Requiring Inspection (March 22)



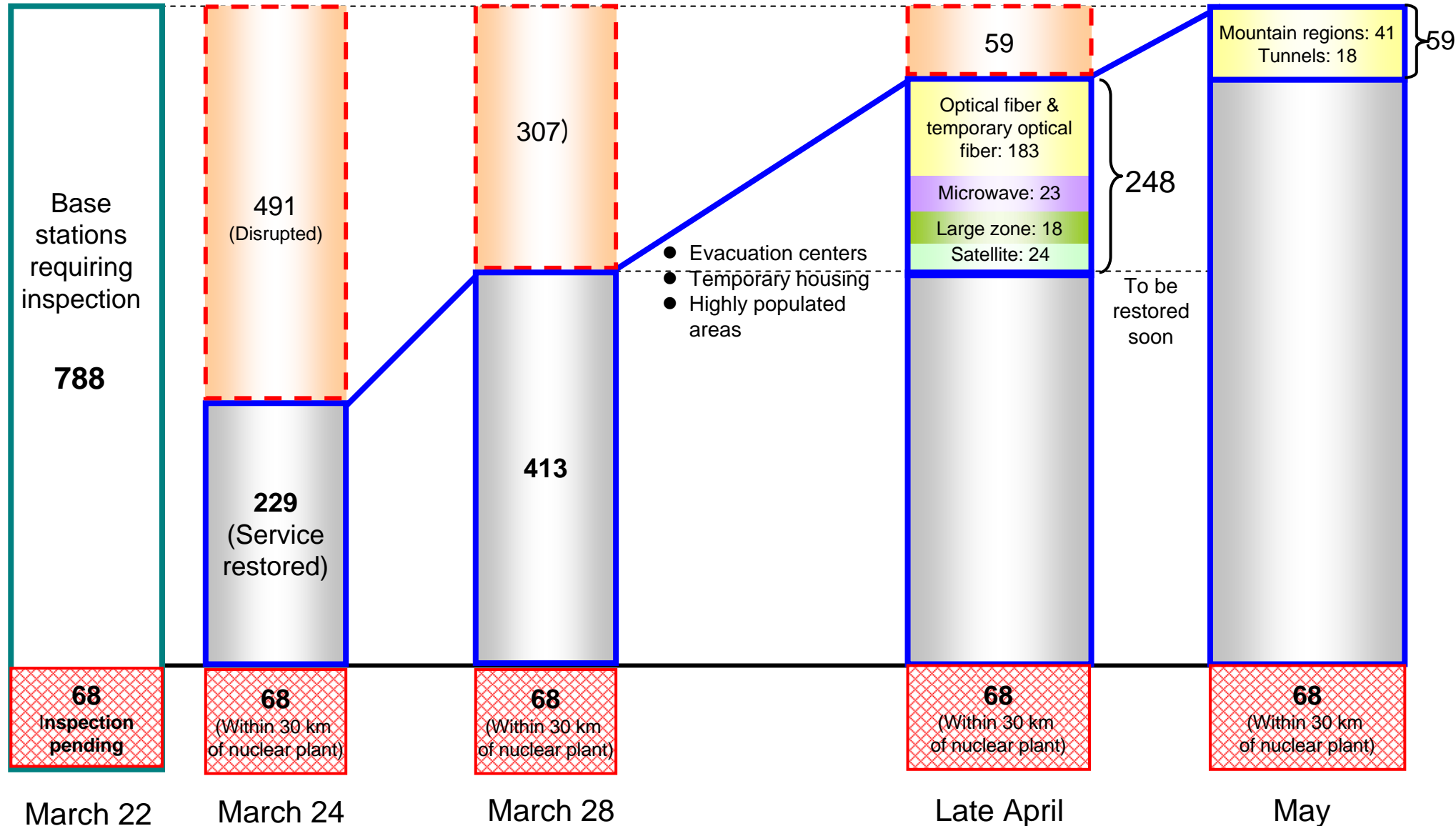
Inspection Results (March 28)



Key Service Restoration Measures



Restoration Progress & Outlook



Base Stations Expected to be Restored (1/2)

Service Restoration Schedules (248)

	Scheduled for Completion by Late April	
Iwate	137	
	Mid-April	Late April
	89	48
Miyagi	89	
	Mid-April	Late April
	61	28
Fukushima	22	
	Mid-April	Late April
	0	22
Total	248	
	Mid-April	Late April
	150	98

Base Stations Expected to be Restored (2/2)

Service Restoration Schedules (59)

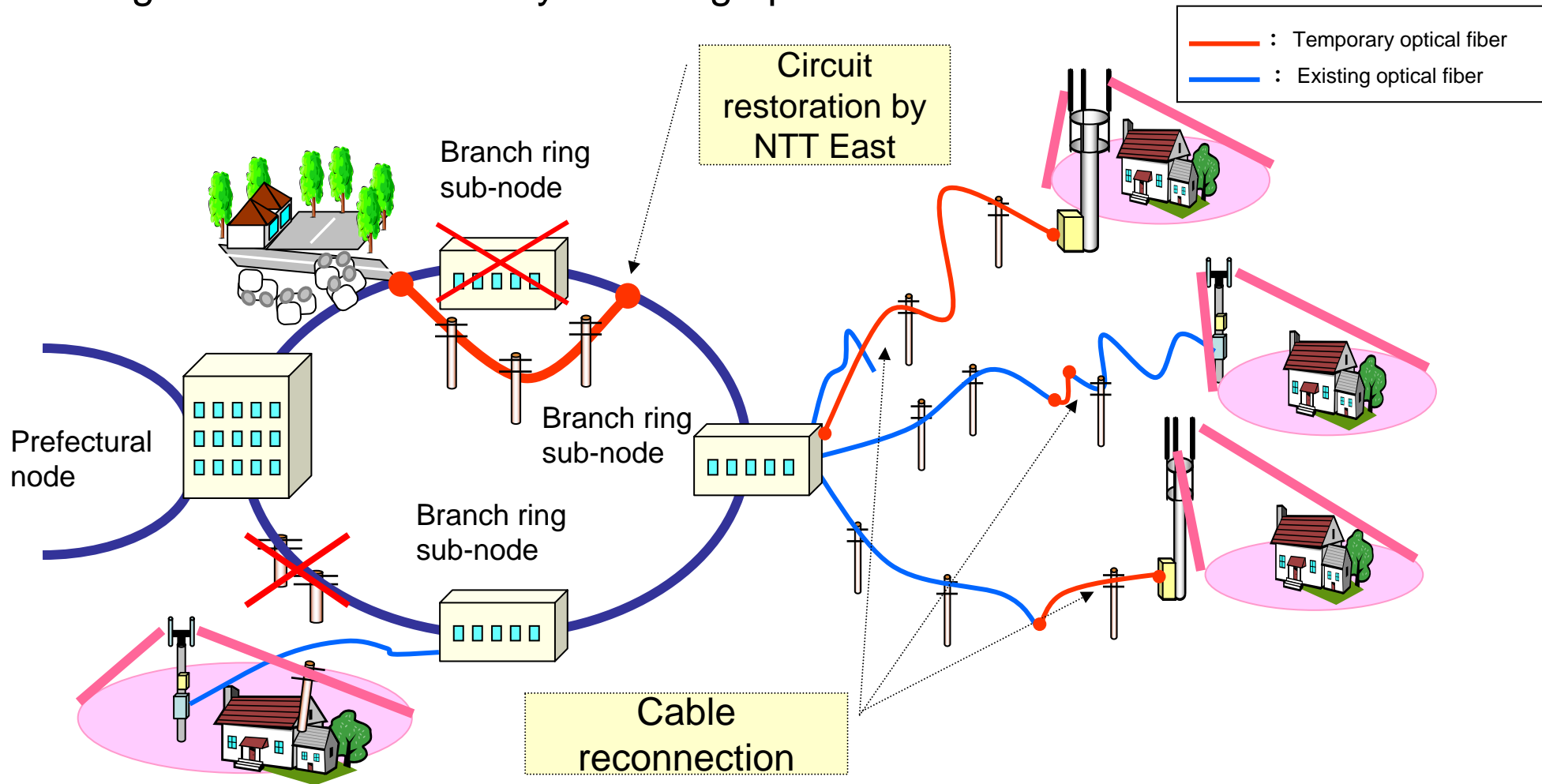
	Scheduled for Completion by May		
		Mountain Regions	Tunnels
Iwate	47	37	10
Miyagi	8	1	7
Fukushima	4	3	1
Total	59	41	18

Restoration Schedule Undetermined: 68
(Within 30-km of Fukushima nuclear plant)

Service Restoration Measures (1/3)

1. Optical fiber and temporary optical fiber

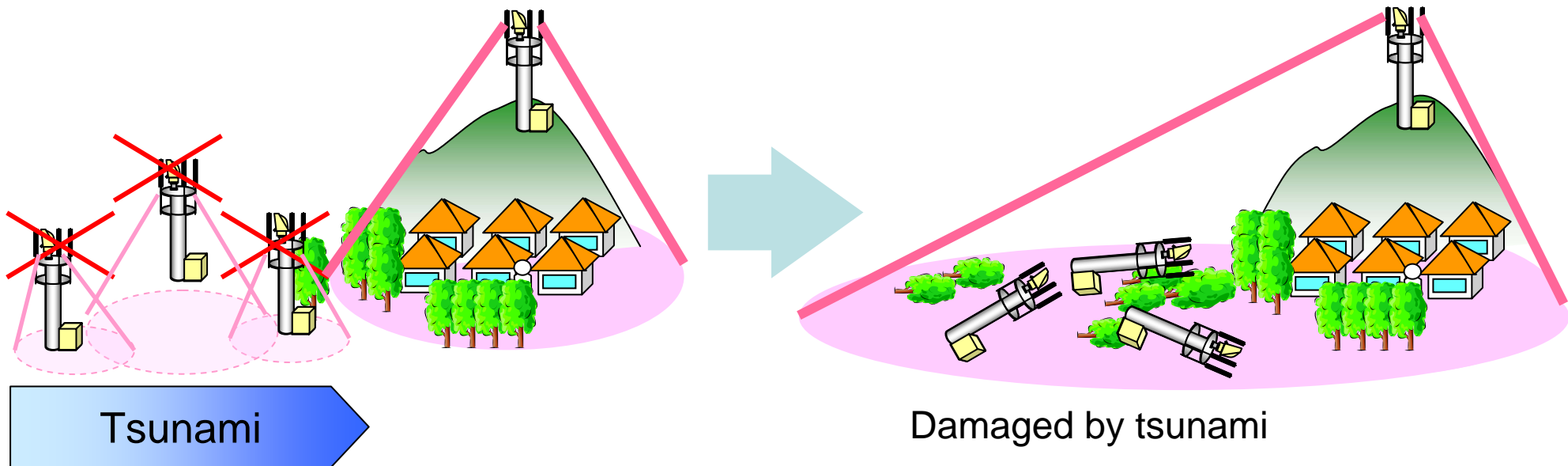
Restoring transmission lines by installing optical fiber cables



Service Restoration Measures (2/3)

2. Large zone scheme

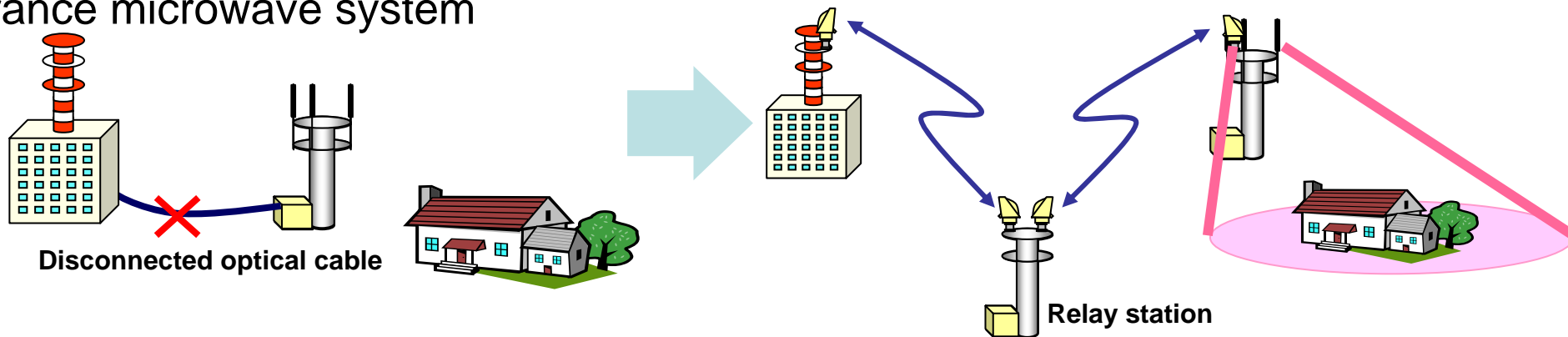
Utilizing large zone scheme applied to high-elevation base stations to restore services in affected areas



Service Restoration Measures (3/3)

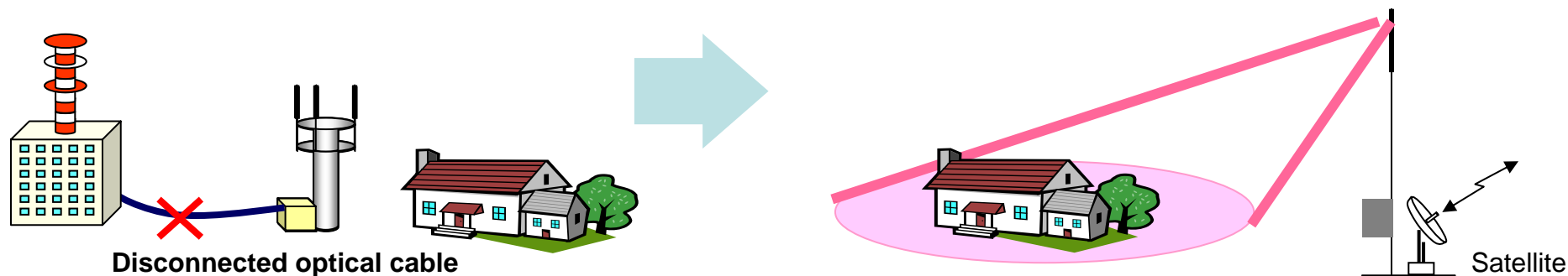
3. Entrance microwave system

Restoring relay transmission lines and access transmission lines by utilizing entrance microwave system



4. Satellite circuits

Restoring service by installing satellite circuits






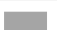


Restoration Area Maps








● Restoration area map uploaded on website (Japanese only) beginning March 20

Online map shows restoration status in the heavily damaged Iwate, Miyagi and Fukushima prefectures. Users can search by municipalities to confirm areas in which:

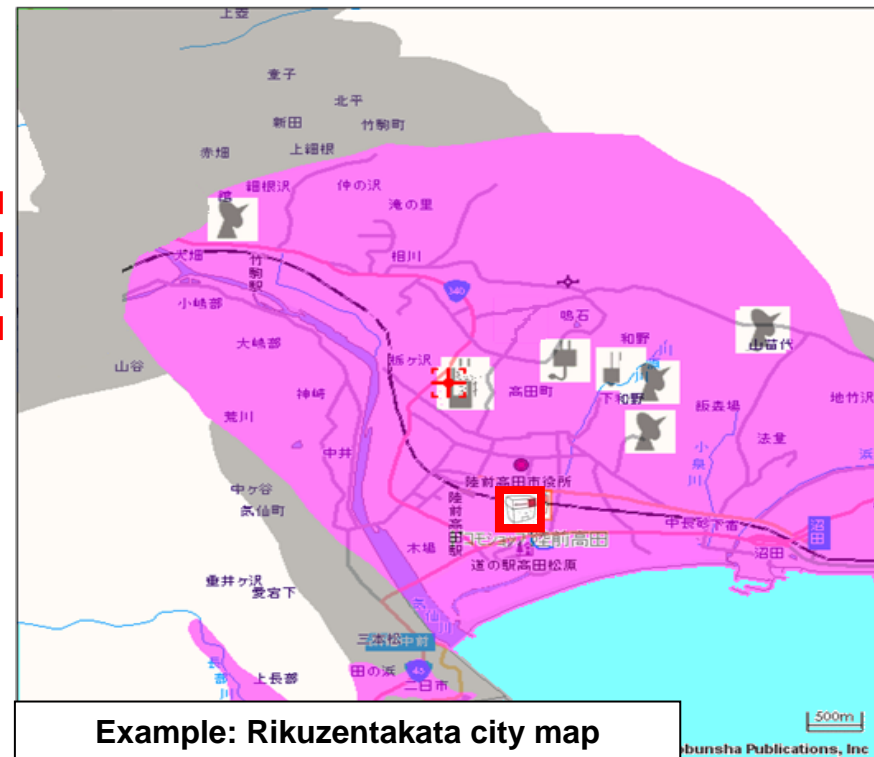
- DOCOMO's FOMA 3G service is available
- Services are scheduled for restoration using base station vehicles
- Satellite phones and free phone-charging services are available
- docomo Shops are open for business

● Service restoration schedule to be introduced in early April

FOMA Service Area	
	Service available
	Service restored by base station vehicles
	Service to be restored soon
	Restoration scheduled by mid-April
	Restoration scheduled for mid- to late April
	Restoration scheduled for May or beyond

Icons	
	docomo Shop (open for business)
	docomo Shop (open but with limited services)
	docomo Shop (closed)
	Free satellite mobile phone service
	Free mobile phone service
	Free mobile phone charging service
	Base station vehicle

To be introduced
in early April



Example: Rikuzentakata city map

500m
bunsha Publications, Inc

Disaster Recovery Programs

The following disaster recovery programs will be extended

Program		Before	After
1	Extension of walk-in payment deadline for charges (extension approximately one month)	Payment deadline of May 2 for March bills	Payment deadline of May 2 for March bills Payment deadline of May 31 for April bills
2	Mobile phone repair charges for half the regular price	Available until April 11	Available until May 31
3	Free data restoring service for water-soaked mobile phones (Regular price: 5,250 yen including tax)		
4	Special discount at time of mobile phone purchase (maximum of 10,500 yen including tax)		
5	No fee for FOMA SIM card reissuance		

Note: Programs 2, 3, 4 and 5 are offered at docomo Shops nationwide.

Attachment 1 Base Station Equipments and Base Stations

- Currently reports are based on the number of disrupted base station equipments
- In the future, the number of disrupted base stations is to be updated as recovery efforts are made at each base station sites

As of March 28, 2011

	Number of Disrupted Base Station Equipments	Number of Disrupted Base Stations
Iwate	220	184
Miyagi	180	97
Fukushima	130	94*
Total	530	375*

Base station: A site where base station equipments are installed.

There may be instances where there are multiple base station equipments (i.e. 2GHz & 800MHz) installed in a single base station.

*Includes 68 disrupted base stations located within 30-km of Fukushima nuclear plant



Collapse by tsunami
(Concrete post)

1. Base station facility (Matsuhima-Nobiru, Miyagi)



2. Transmission facility (Noda-mura, Iwate)



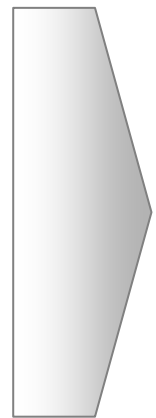
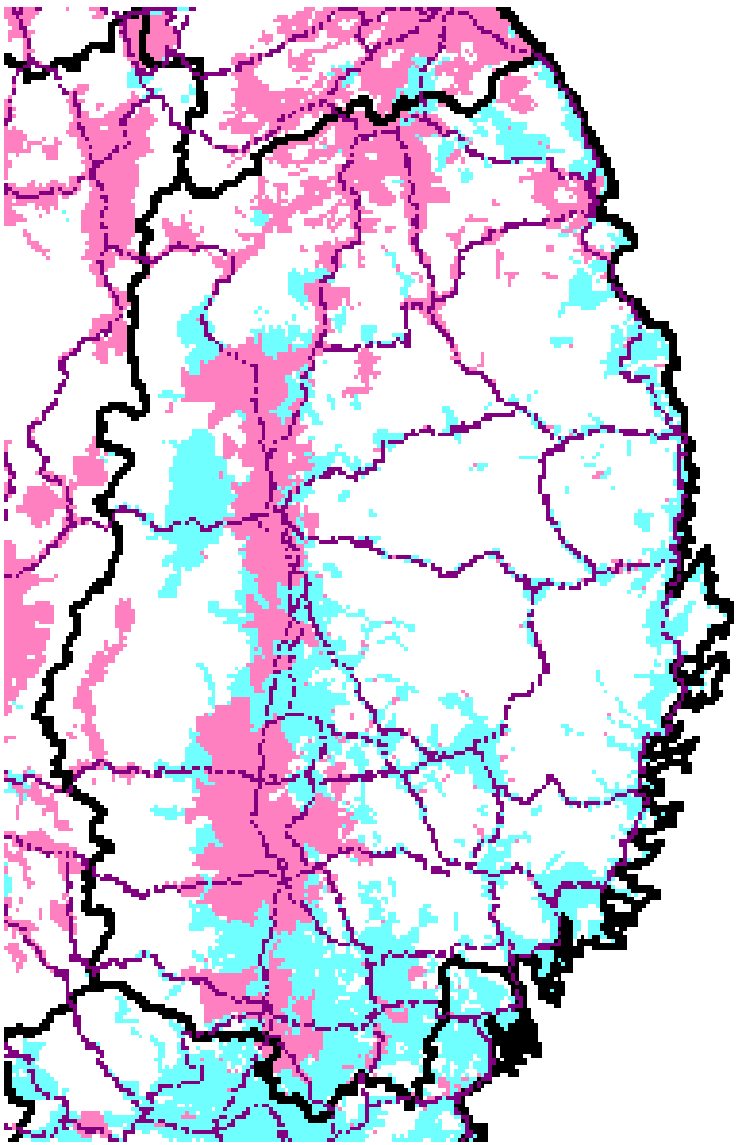
Displaced by tsunami

3. Base station facility (Ishinomaki-Midori-cho, Miyagi)

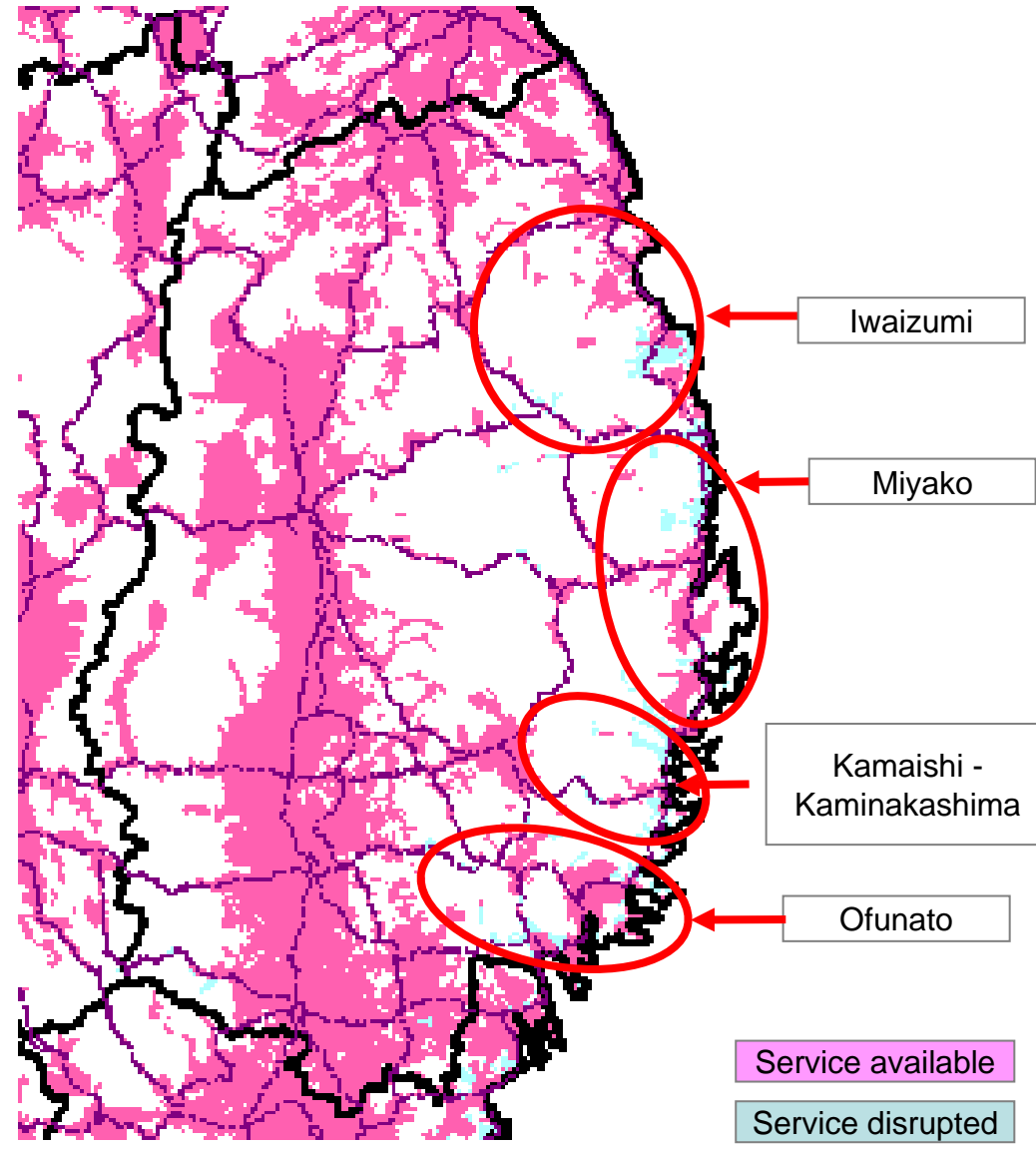


4. docomo Shop (Ishinomaki-Higashi, Miyagi)

6:00 p.m. on Sunday, March 13

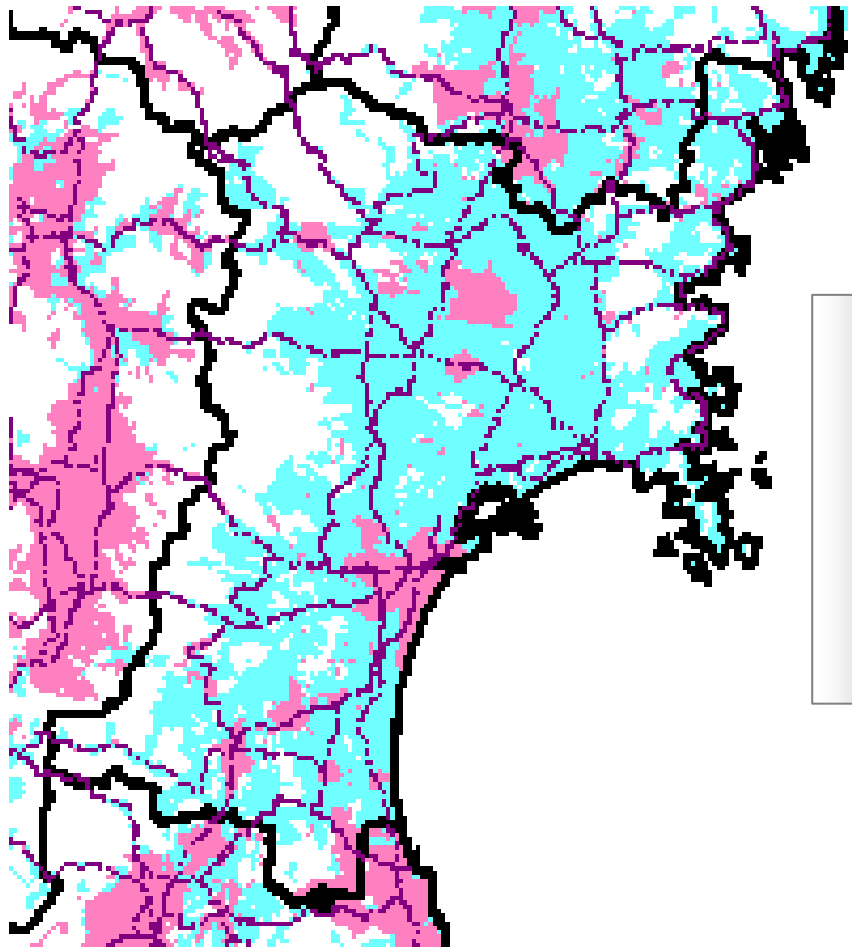


4:00 a.m. on Monday, March 28

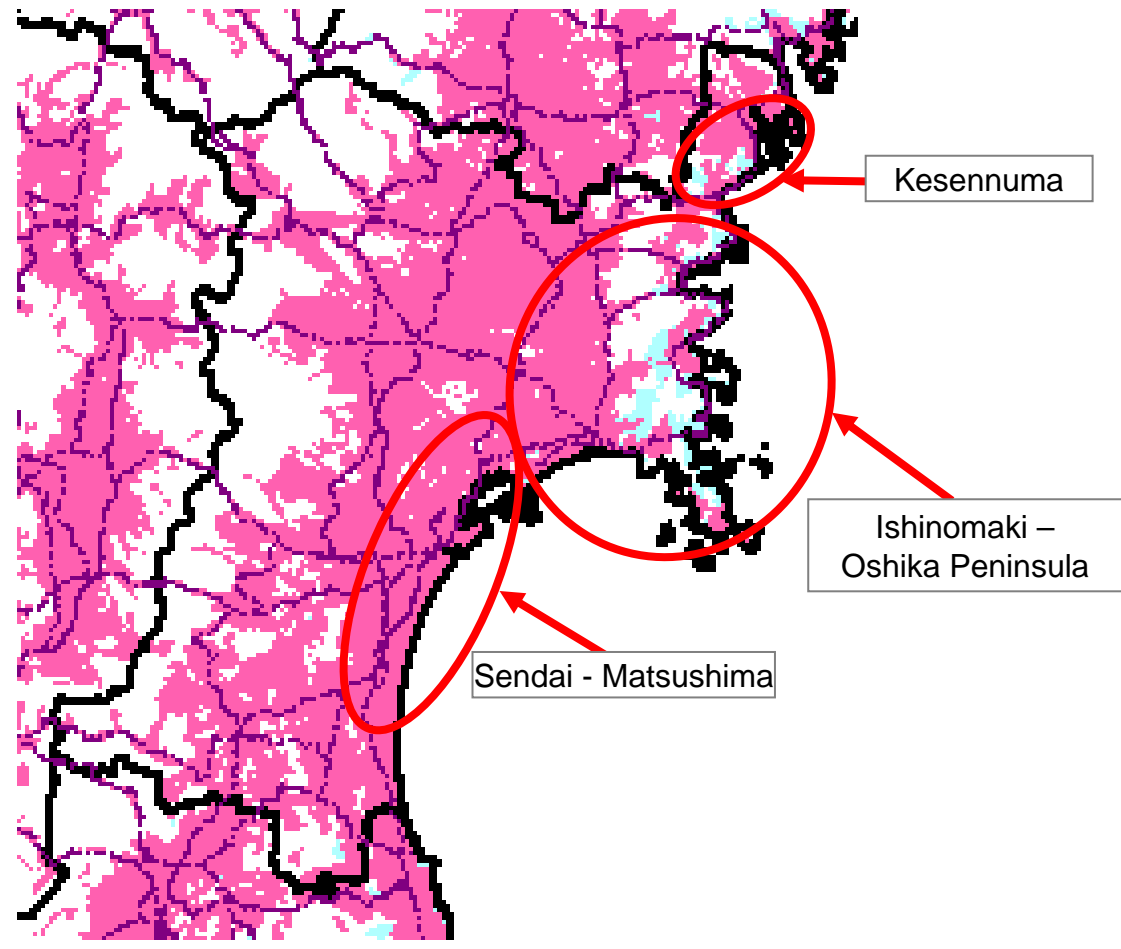


Attachment 3-2 Service Recovery (Miyagi)

6:00 p.m. on Sunday, March 13



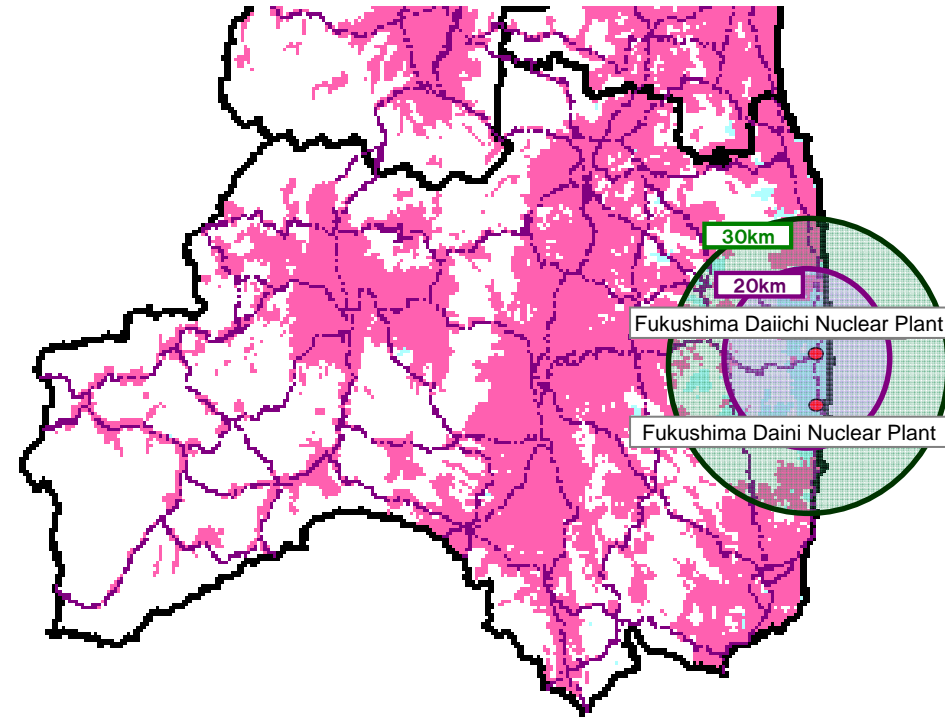
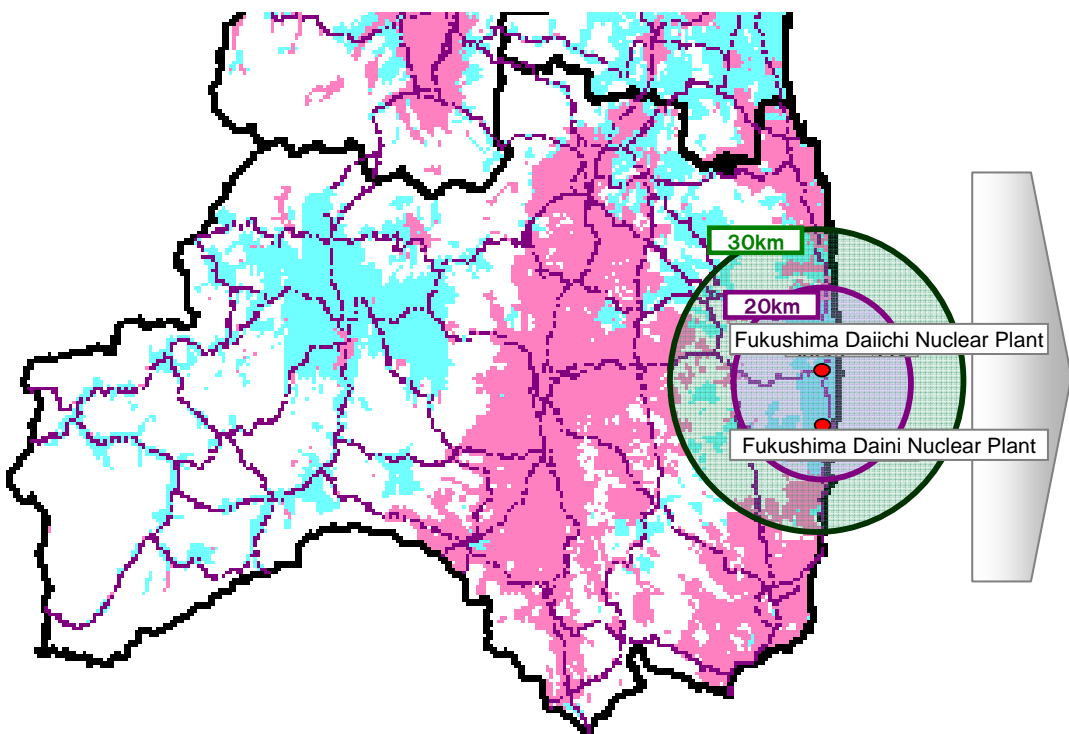
4:00 a.m. on Monday, March 28



Service available
Service disrupted

6:00 p.m. on Sunday, March 13

4:00 a.m. on Monday, March 28



Service available
Service disrupted