

Corporate Profile

Corporate Profile

Corporate Name	: NIPPON TELEGRAPH AND TELEPHONE EAST CORPORATION
Head Office	: 19-2,Nishi-shinjuku 3-chome, Shinjuku, Tokyo 163-8019, Japan Tel : +81-3-5359-5111
Date of Establishment	: July 1,1999
Business	: Regional telecommunications services ^{*1} in the eastern areas of Japan ^{*2} , business pertaining to these services, business activities to achieve the purpose of the company, business activities to utilize the company's resources
Paid-In Capital	: 335 billion yen
Shareholder	: NIPPON TELEGRAPH AND TELEPHONE CORPORATION(100%)
Total Employees	: 5,900 (As of March 31, 2011)

*1 Inter-prefectural telecommunications services including telephone,leased circuit, and integrated digital communication services.

*2 Hokkaido, Aomori, Iwate, Miyagi, Akita, Yamagata, Fukushima, Ibaraki, Tochigi, Gunma, Saitama, Chiba, Tokyo, Kanagawa, Niigata, Yamanashi and Nagano

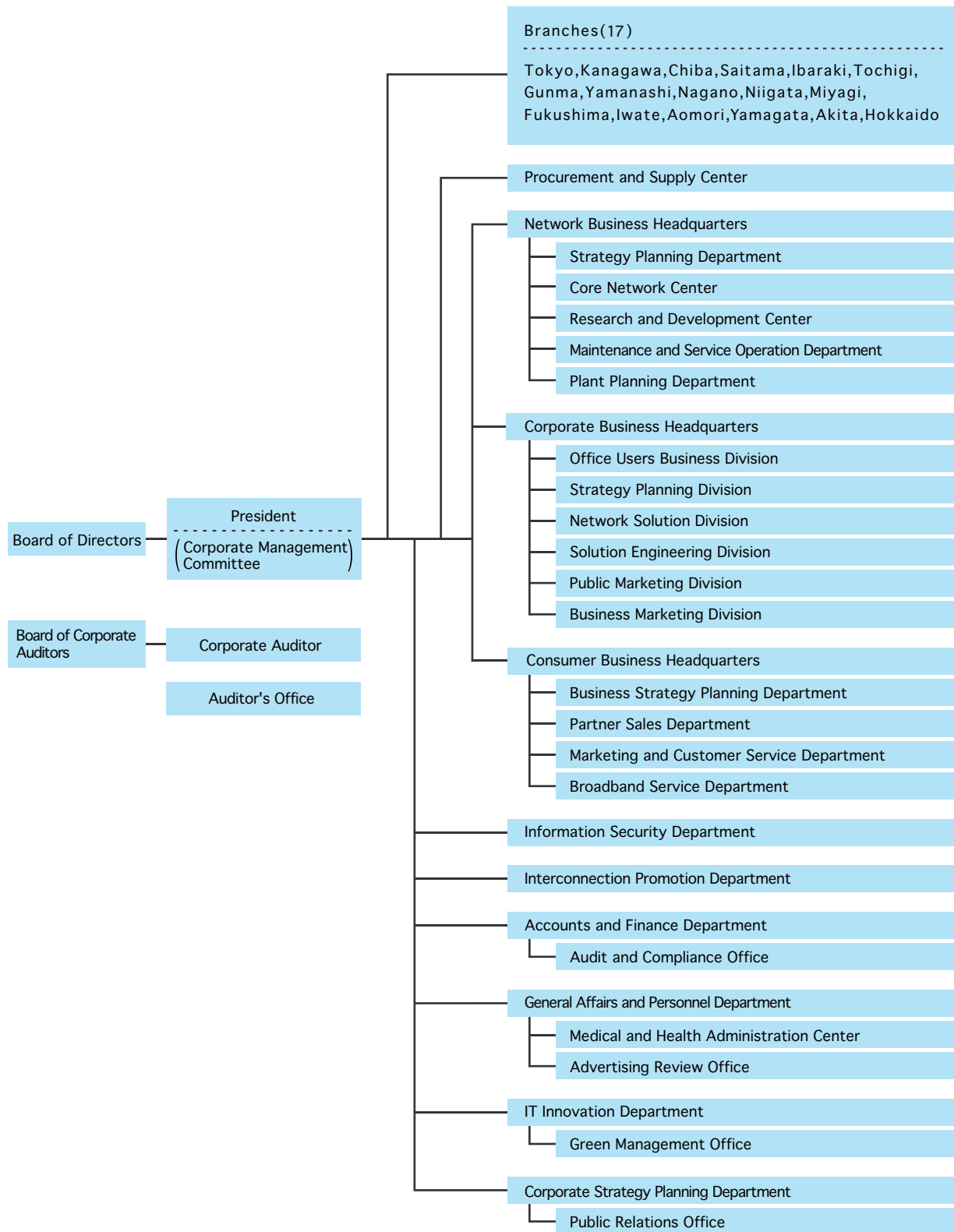
Directors and Auditors

President	: Tsutomu Ebe
Senior Executive Vice Presidents	: Koichi Maeda Fuminori Kozono
Executive Vice Presidents	: Masayuki Yamamura Masami Yasuda Hiroshi Nakagawa
Senior Vice Presidents	: Masahide Oka Takashi Kagaya Yoshihisa Omura Fukuzo Inoue Tetsuya Obata Akira Shimada Natsuo Minamikawa Motoyuki Ii Tetsuya Shoji
Corporate Auditors	: Mitsuhiro Takase Hikaru Chono Yukihiro Ozaki



(As of June 17, 2011)

Organization Chart



(As of July 1, 2010)

Non-consolidated Operating Results

(Billions of yen)

	FY2009	FY2010
Operating revenues	1,928.6	1,957.1
Operating expenses	1,881.0	1,879.9
Operating income	47.6	77.1
Recurring profit	71.7	96.0
Income before income taxes	81.5	76.8
Net income	50.5	52.3

Non-consolidated Financial Position

(Billions of yen)

	March 31, 2010	March 31, 2011
Fixed assets	3,229.2	3,168.2
Current assets	510.9	596.8
Total assets	3,740.2	3,765.0
Long-term liabilities	1,067.7	948.8
Current liabilities	561.2	686.4
Total liabilities	1,629.0	1,635.2
Interest-bearing debt*	849.3	818.7
Shareholders' equity	2,111.2	2,129.7
Total liabilities and shareholders' equity	3,740.2	3,765.0

* Partial listing only