

# Corporate Profile

## Corporate Profile

---

|                       |  |
|-----------------------|--|
| Corporate Name        | : NIPPON TELEGRAPH AND TELEPHONE EAST CORPORATION  |
| Head Office           | : 19-2,Nishi-shinjuku 3-chome, Shinjuku, Tokyo 163-8019,<br>Japan<br>Tel : +81-3-5359-5111   |
| Date of Establishment | : July 1,1999  |
| Business              | : Regional telecommunications services <sup>*1</sup> in the eastern areas<br>of Japan <sup>*2</sup> , business pertaining to these services, business<br>activities to achieve the purpose of the company, business<br>activities to utilize the company's resources |
| Paid-In Capital       | : 335 billion yen  |
| Shareholder           | : NIPPON TELEGRPH AND TELEPHONE CORPORATION(100%)  |
| Employees             | : 8,150 (As of Ma r ch 31, 2006)   |

\*1 Inter-prefectural telecommunications services including telephone,leased circuit, and integrated digital communication services.

\*2 Hokkaido, Aomori, Iwate, Miyagi, Akita, Yamagata, Fukushima, Ibaraki, Tochigi, Gunma, Saitama, Chiba, Tokyo, Kanagawa, Niigata, Yamanashi and Nagano

## Directors and Auditors

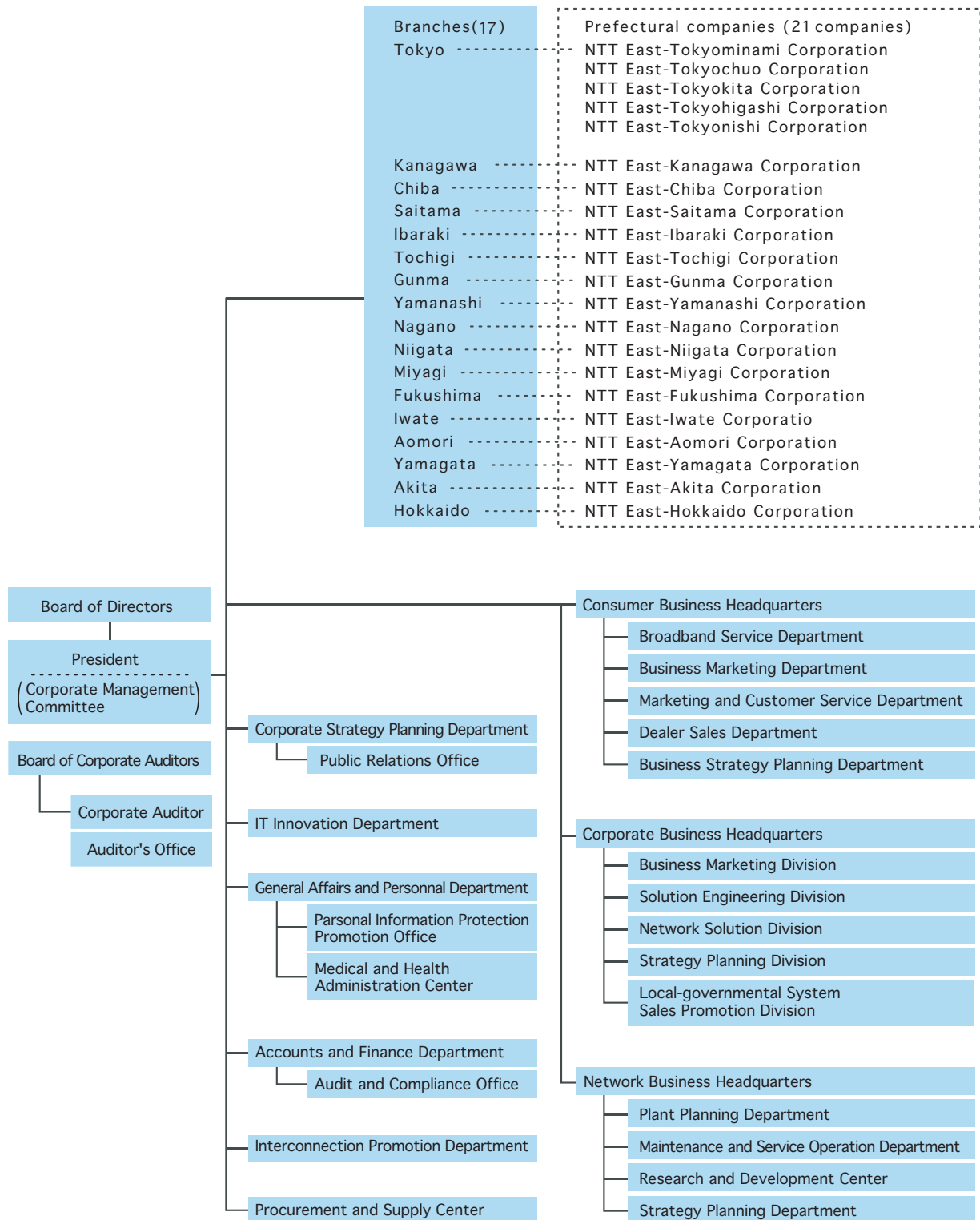
---

|                                  |  |
|----------------------------------|--|
| President                        | : Toyohiko Takabe  |
| Senior Executive Vice Presidents | : Tetsuo Koga<br>Kazuo Ohki  |
| Senior Vice Presidents           | : Masatoshi Kodama<br>Akihiko Okada<br>Fuminori Kozono<br>Hiroki Watanabe<br>Masayuki Yamamura<br>Ichiro Shoji<br>Mitsuhiro Watanabe<br>Tatsuhisa Yoshimura<br>Toyoaki Ukita<br>Masami Yasuda<br>Kiyoshi Kousaka |
| Corporate Auditors:              | : Masamoto Horiguchi<br>Masahiro Wada<br>Sumikazu Sekiguchi  |



(As of June 23, 2006)

# Organization Chart



(As of March 1, 2007)

## Non-consolidated Operating Results

(Billions of yen)

|                            | FY2004  | FY2005  |
|----------------------------|---------|---------|
| Operating revenues         | 2,180.9 | 2,125.3 |
| Operating expenses         | 2,093.1 | 2,059.3 |
| Operating income           | 87.7    | 65.9    |
| Recurring profit           | 97.6    | 84.2    |
| Income before income taxes | 99.2    | 86.6    |
| Net income                 | 58.1    | 51.2    |

## Non-consolidated Financial Position

(Billions of yen)

|  | March 31, 2005 | March 31, 2006 |
|--|----------------|----------------|
| Fixed assets                               | 3,503.8        | 3,479.7        |
| Current assets                             | 584.4          | 544.7          |
| Total assets                               | 4,088.3        | 4,024.5        |
| Long-term liabilities                      | 1,547.2        | 1,367.4        |
| Current liabilities                        | 622.0          | 716.1          |
| Total liabilities                          | 2,169.2        | 2,083.5        |
| Interest-bearing debt*                     | 1,028.0        | 960.8          |
| Shareholders' equity                       | 1,919.0        | 1,941.0        |
| Total liabilities and shareholders' equity | 4,088.3        | 4,024.5        |

\* Partial listing only