

Corporate Profile

Corporate Profile

Corporate Name : NIPPON TELEGRAPH AND TELEPHONE EAST CORPORATION

Head Office : 19-2,Nishi-shinjuku 3-chome, Shinjuku, Tokyo 163-8019,
Japan

Tel : +81-3-5359-5111

Date of Establishment : July 1,1999

Business : Regional telecommunications services^{*1} in the eastern areas of Japan^{*2}, business pertaining to these services, business activities to achieve the purpose of the company, business activities to utilize the company's resources

Paid-In Capital : 335 billion yen

Shareholder : NIPPON TELEGRAPH AND TELEPHONE CORPORATION(100%)

Total Employees : 5,900 (As of March 31, 2012)

*1 Telephone Services(intra-prefectural communications), Integrated Digital Communications Services(Basic mode, intra-prefectural communications), Leased Circuit Services(intra-prefectural communications),and so on

*2 Hokkaido, Aomori, Iwate, Miyagi, Akita, Yamagata, Fukushima, Ibaraki, Tochigi, Gunma, Saitama, Chiba, Tokyo, Kanagawa, Niigata, Yamanashi and Nagano

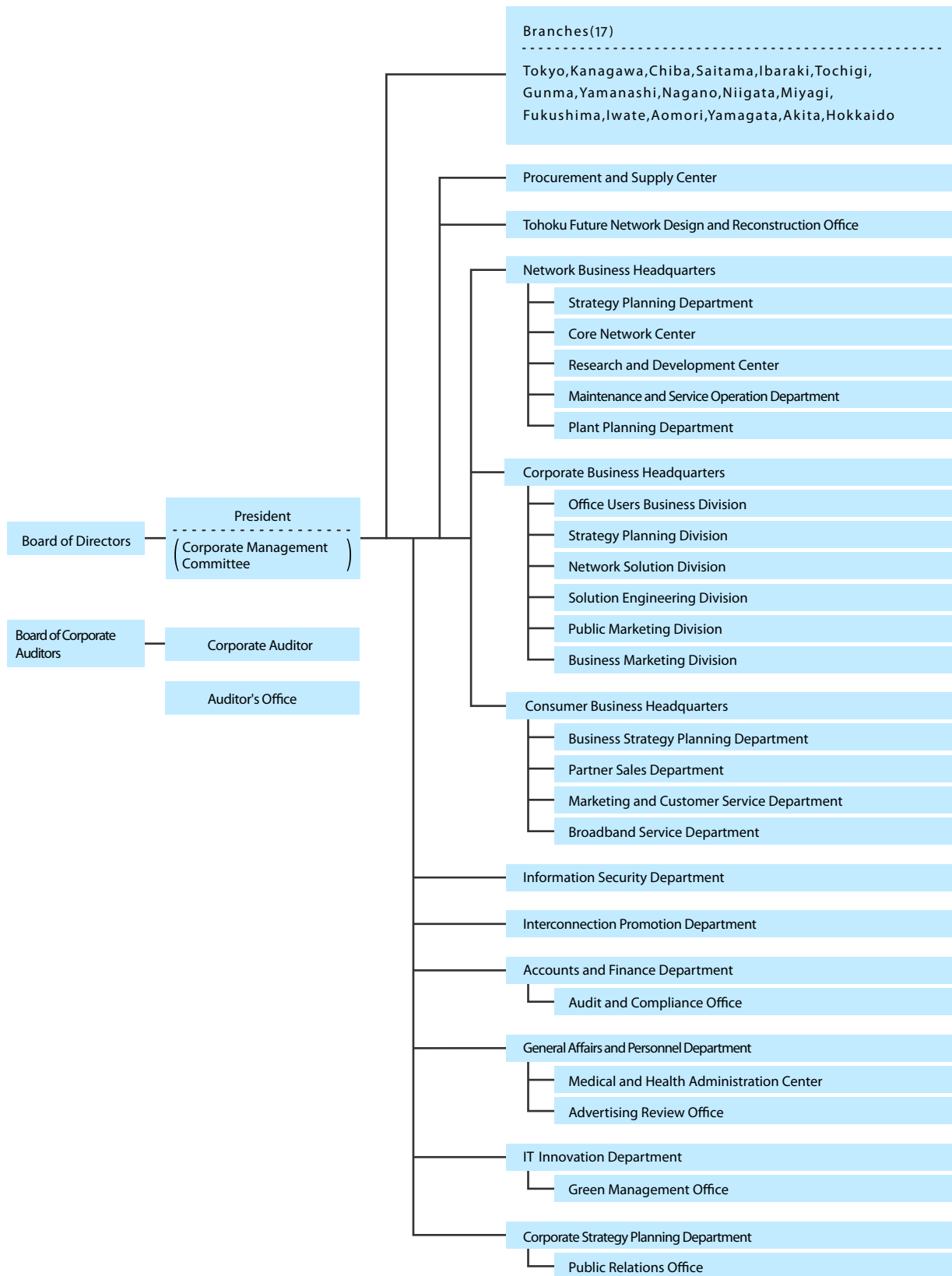
Directors and Auditors

President	: Tsutomu Ebe
Senior Executive Vice Presidents	: Koichi Maeda Fuminori Kozono
Executive Vice Presidents	: Masayuki Yamamura Masami Yasuda Hiroshi Nakagawa
Senior Vice Presidents	: Masahide Oka Takashi Kagaya Yoshihisa Omura Fukuzo Inoue Tetsuya Obata Akira Shimada Natsuo Minamikawa Motoyuki Ii Tetsuya Shoji
Corporate Auditors	: Mitsuhiro Takase Hikaru Chono Yukihiro Ozaki



(As of June 17, 2011)

Organization Chart



(As of May 16, 2011)

Non-consolidated Operating Results

	(Billions of yen)	
	FY2010	FY2011
Operating revenues	1,957.1	1,851.5
Operating expenses	1,879.9	1,801.2
Operating income	77.1	50.3
Recurring profit	96.0	75.2
Income before income taxes	76.8	67.0
Net income	52.3	32.1

Non-consolidated Financial Position

	(Billions of yen)	
	March 31, 2011	March 31, 2012
Fixed assets	3,168.2	3,124.7
Current assets	596.8	576.7
Total assets	3,765.0	3,701.4
Long-term liabilities	948.8	877.6
Current liabilities	686.4	695.2
Total liabilities	1,635.2	1,572.8
Interest-bearing debt*	818.7	796.0
Shareholders' equity	2,129.7	2,128.5
Total liabilities and shareholders' equity	3,765.0	3,701.4

* Partial listing only